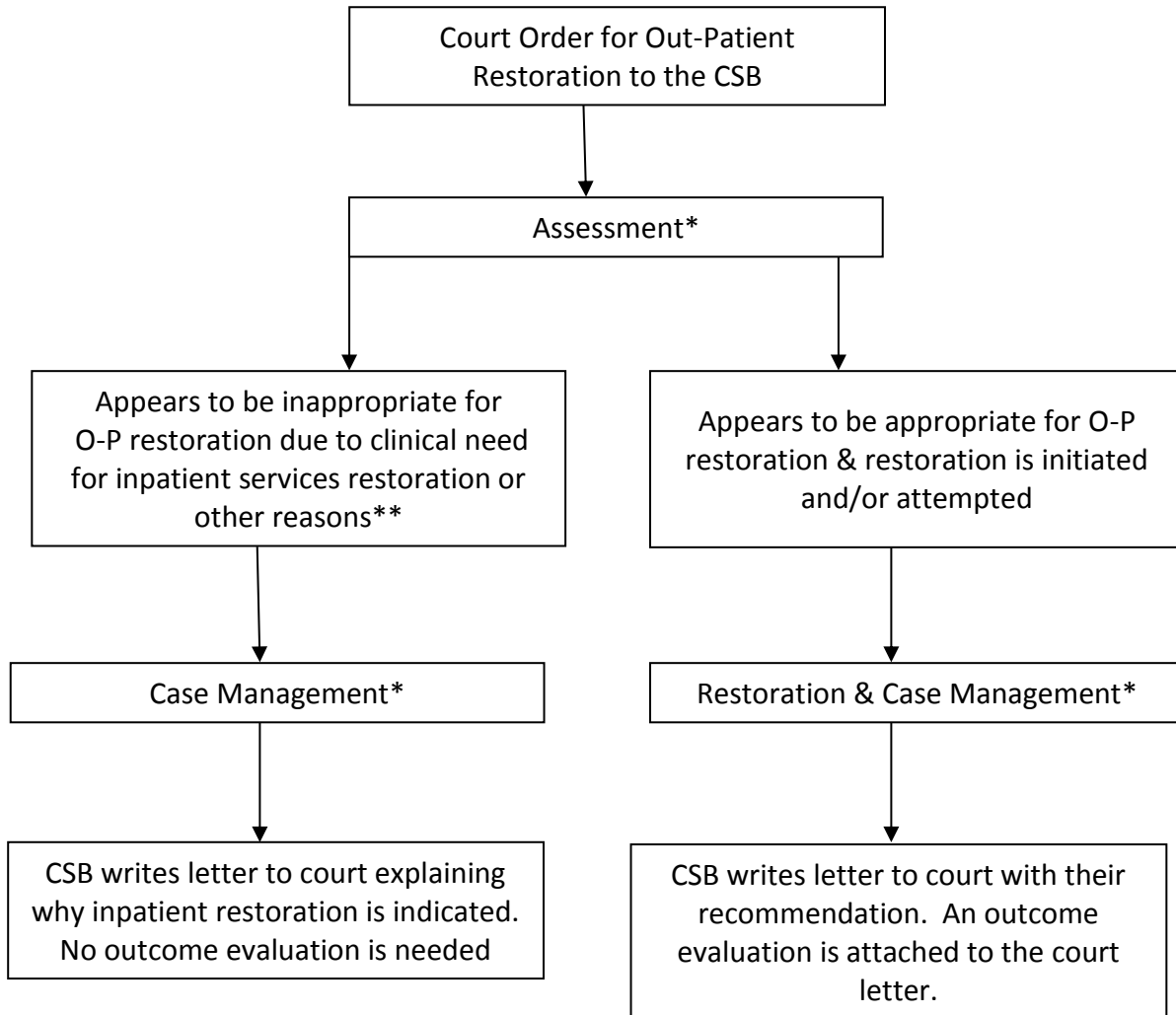


## OUTPATIENT RESTORATION SERVICES: FLOW CHART

---



\* See Definitions document, updated 2/1/16.

\*\*There are other reasons for the CSB to find that the defendant is not appropriate for Out-Patient Restoration services during the assessment phase to include the following:

- Defendant refuses to meet with the CSB restoration staff after several attempts by staff to engage the defendant in the process. This can apply to the defendant on bond or in jail
- Defendant is “unavailable” – doesn’t show for several appointments
- Defendant can’t be located or no forwarding address can be obtained if moved
- Defendant moves outside CSB catchment area, either on bond or while incarcerated