



Virginia Department of
Behavioral Health &
Developmental Services

Crisis Services

Stakeholder Workgroup
12/13/16

Heather Norton

Introduction

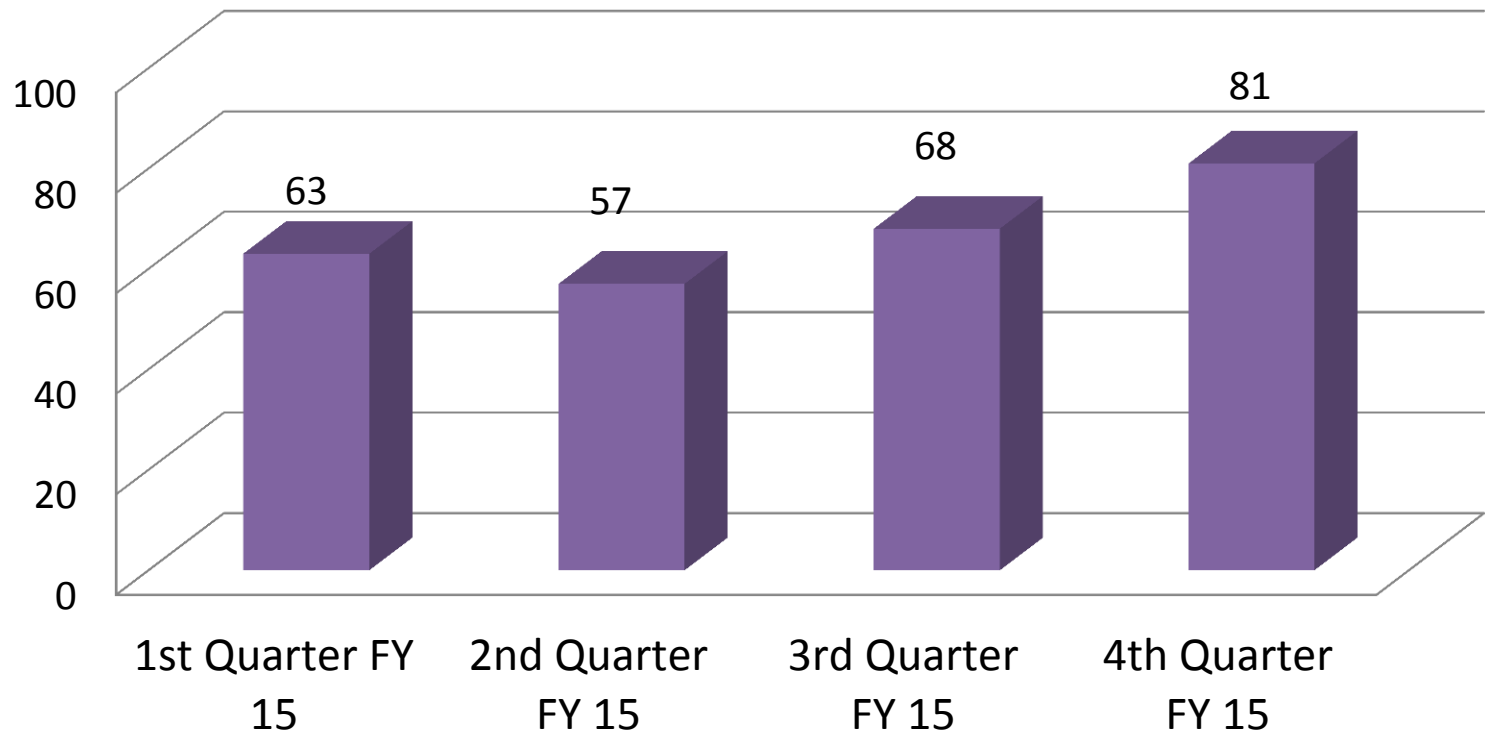
- Retrospective Review of Adult State Psychiatric Hospitalizations
- Retrospective Review of Child State Psychiatric Hospitalizations
- REACH Crisis Quarterly/Annual Data Review
- Current Psychiatric Hospitalization Data

Psychiatric Hospitalization FY15 Data for Adults with DD

MH Hospital	Total Beds Utilized by MH Hospitals Included in these totals are beds from Program Codes: Acute Intensive Psych Certified, Community Preparation, Psychosocial & Long-term Rehabilitation	# of Bed Days Utilized by Individuals with DD	% Bed Days Utilized by Individuals with DD	# of Admissions by Individuals with DD
SVMHI	16,030	1,180	7.4	19
ESH	31,833	1,635	5.1	68
CAT	16,621	1,876	11.3	15
NVMHI	42,892	1,946	4.5	31
SWVMHI	49,435	2,263	4.6	51
CSH	29,618	2,520	8.5	33
WSH	66,763	5,009	7.5	52
Total	253,192	16,429	6.5	269

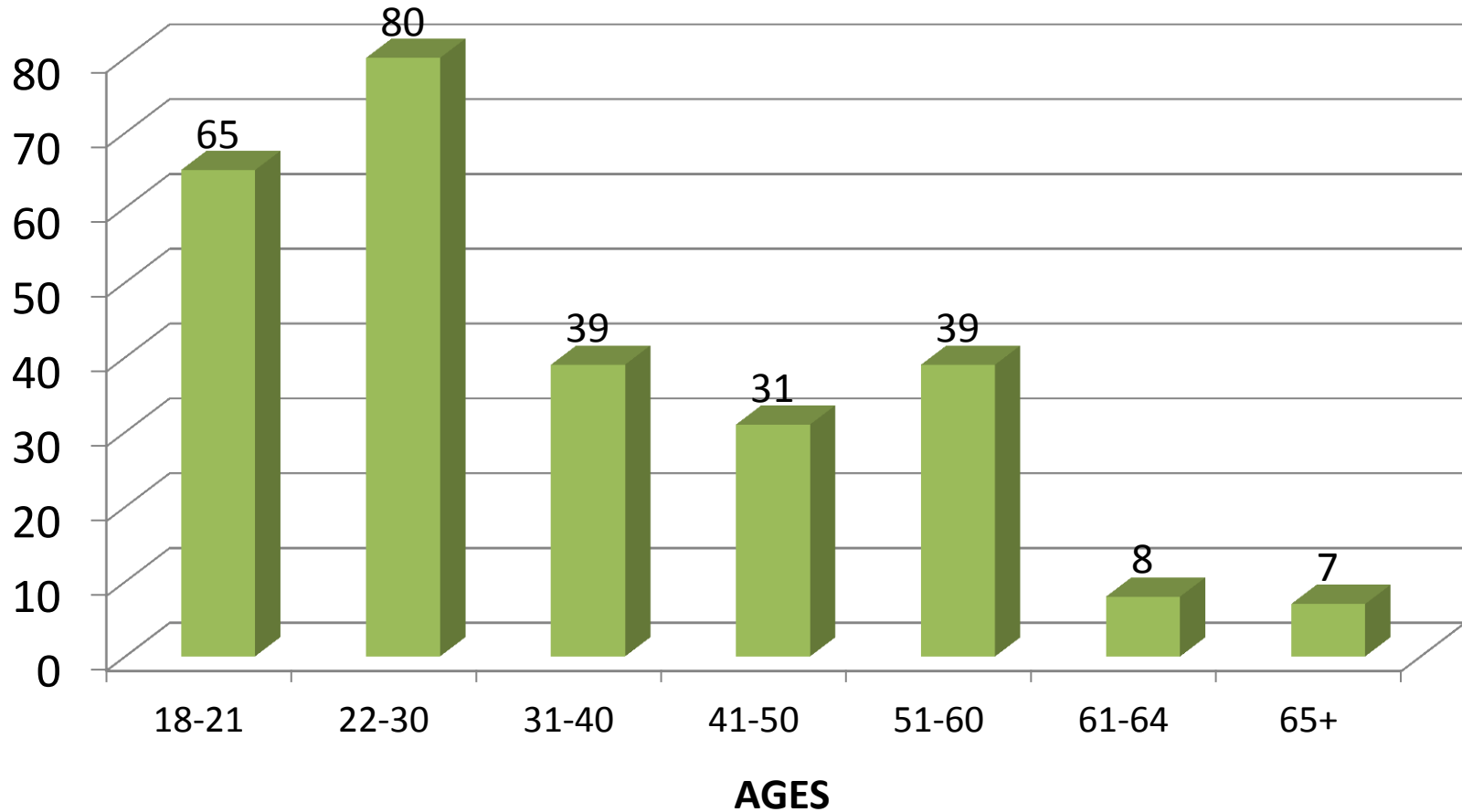
Psychiatric Hospitalizations by Quarter

Figure 3: DD Admissions by Quarter; N= 269



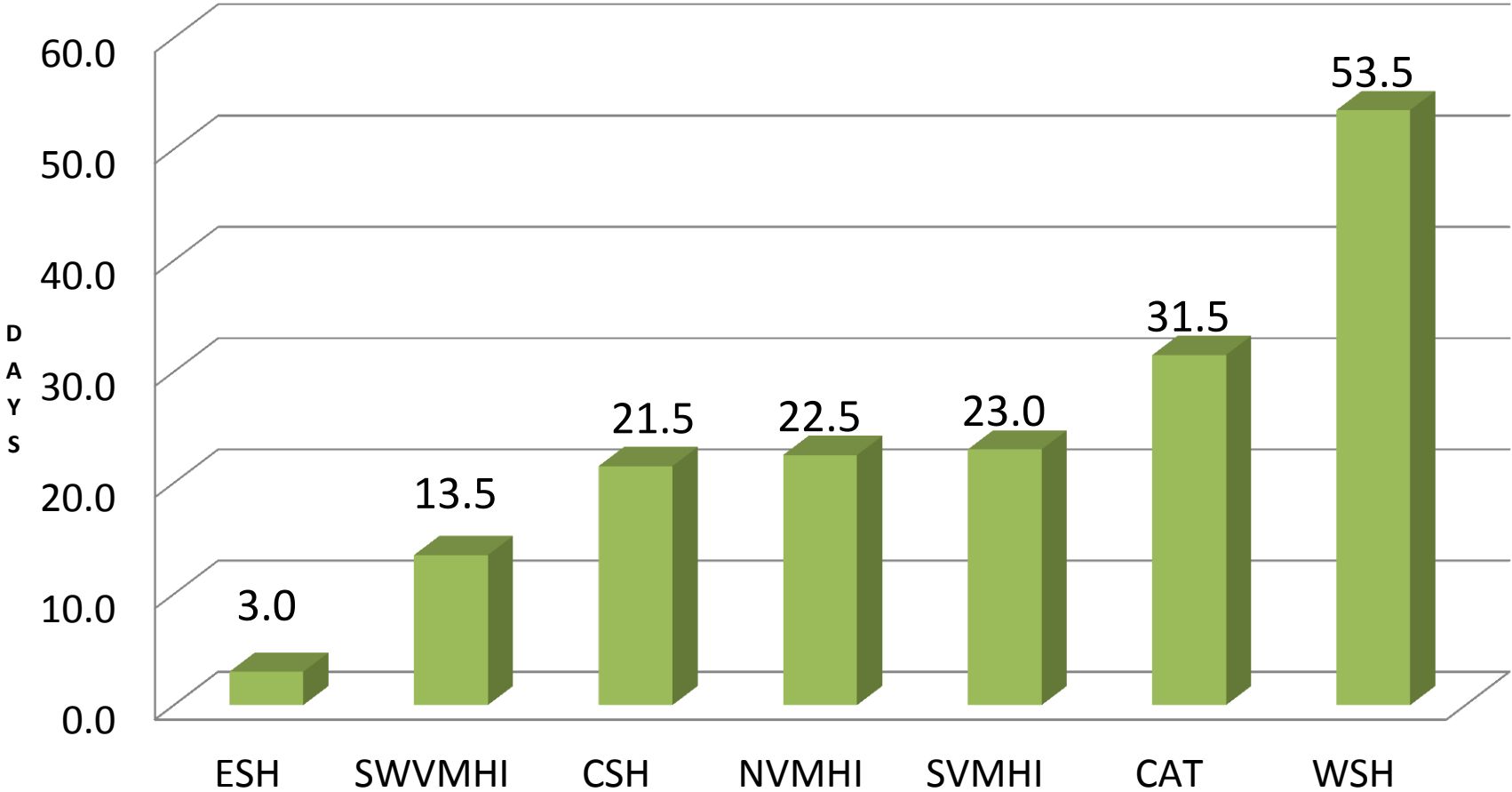
Adult Psychiatric Hospitalizations by age

Figure 4: Ages of Individuals with DD



Length of Stay for Adults with DD

**Figure 6: Individuals with DD
Median LOS by MH Hospital**



Review of Admissions by Diversion Potential

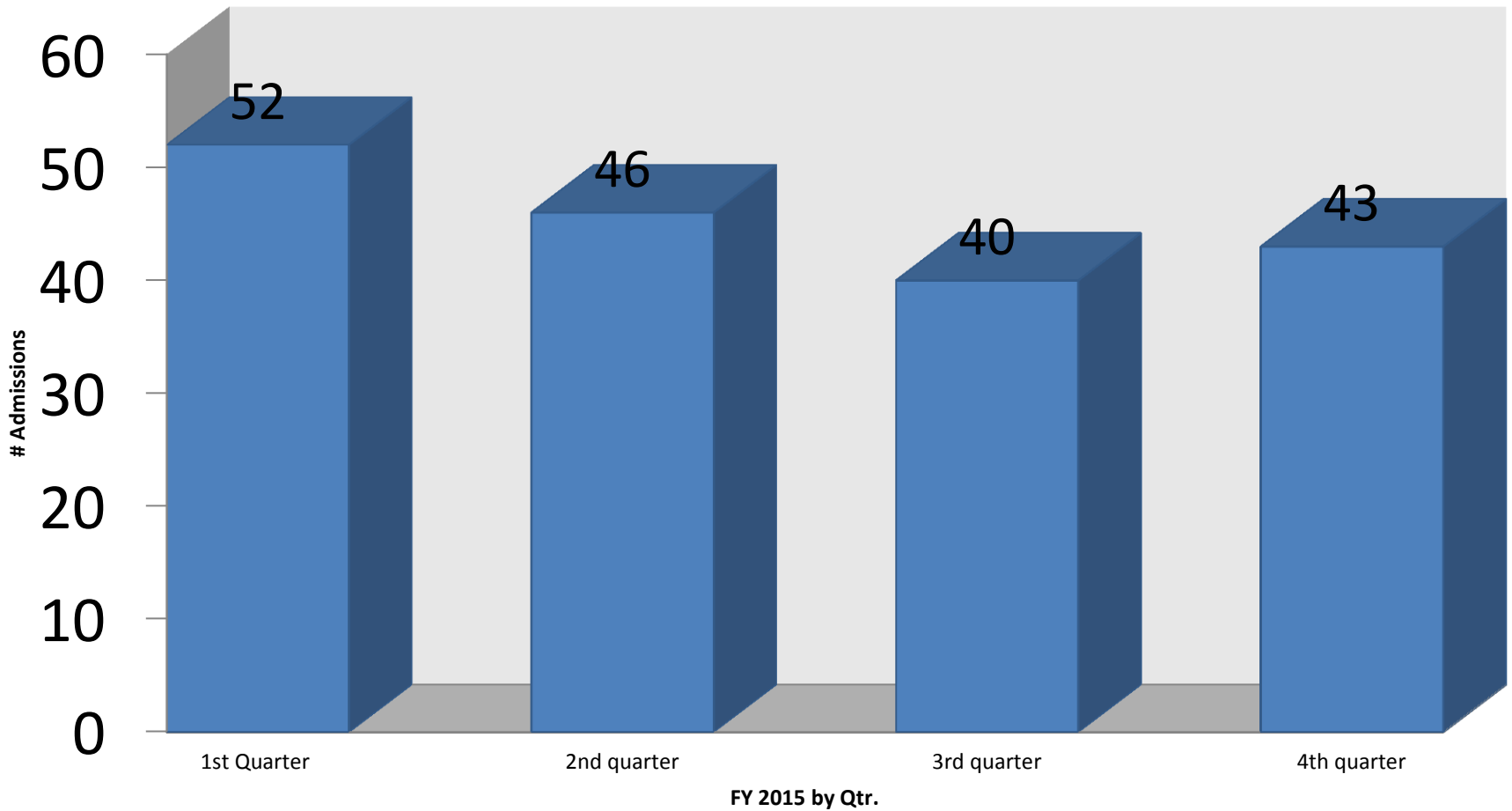
Hospital Admissions N= 269	# of Individuals with DD in which Hospital Diversion Could Have Occurred	% Hospital Diversion that Could Have Occurred	# of Individuals with DD in which Hospital Diversion not Clinically Advised	% Hospital Diversion not Clinically Advised
SVMHI (19)	9	47%	10	53 %
Catawba (15)	5	33 %	10	67 %
SWVMHI (51)	21	41 %	29	57 %
ESH (68)	12	18 %	30	44 %
WSH (52)	7	13 %	40	77 %
NVMHI (31)	5	16 %	19	61 %
CSH (33)	5	15 %	20	61 %
TOTAL	64/269	24 %	158/269	59 %

Psychiatric Hospitalization FY15 Data for Children with DD

MH Hospital	Total Bed Days Available	# of Bed Days Utilized by Individuals with DD	% Bed Days Utilized by Individuals with DD	# of Admissions of Individuals with DD
CCCA	13,043	3,212 (1st Admission)	18.50%	139
		869 (Subsequent Admissions)	6.67%	42

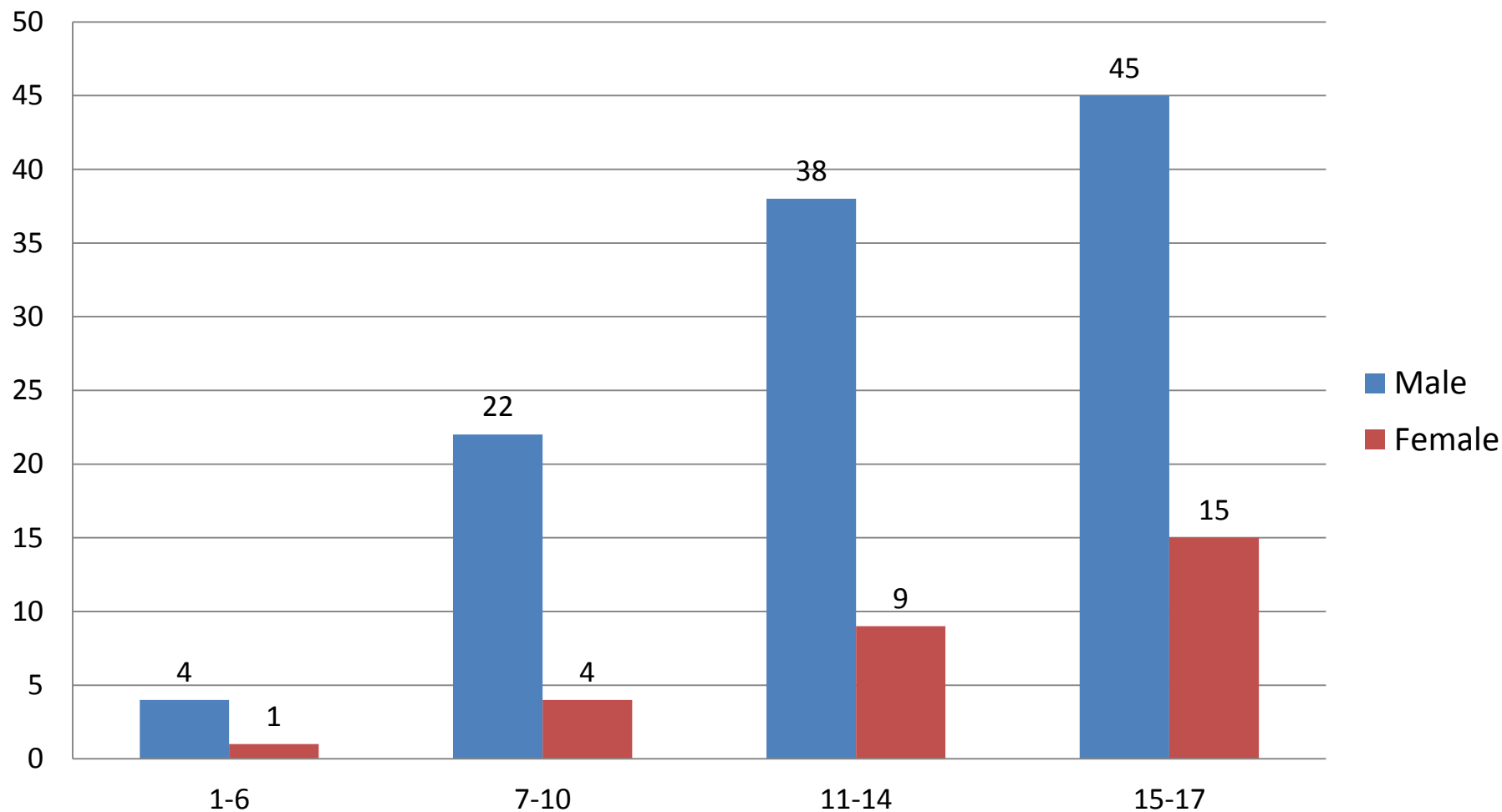
Psychiatric Hospitalizations by Quarter

DD Admissions to CCCA by Quarter N= 181 FY 2015



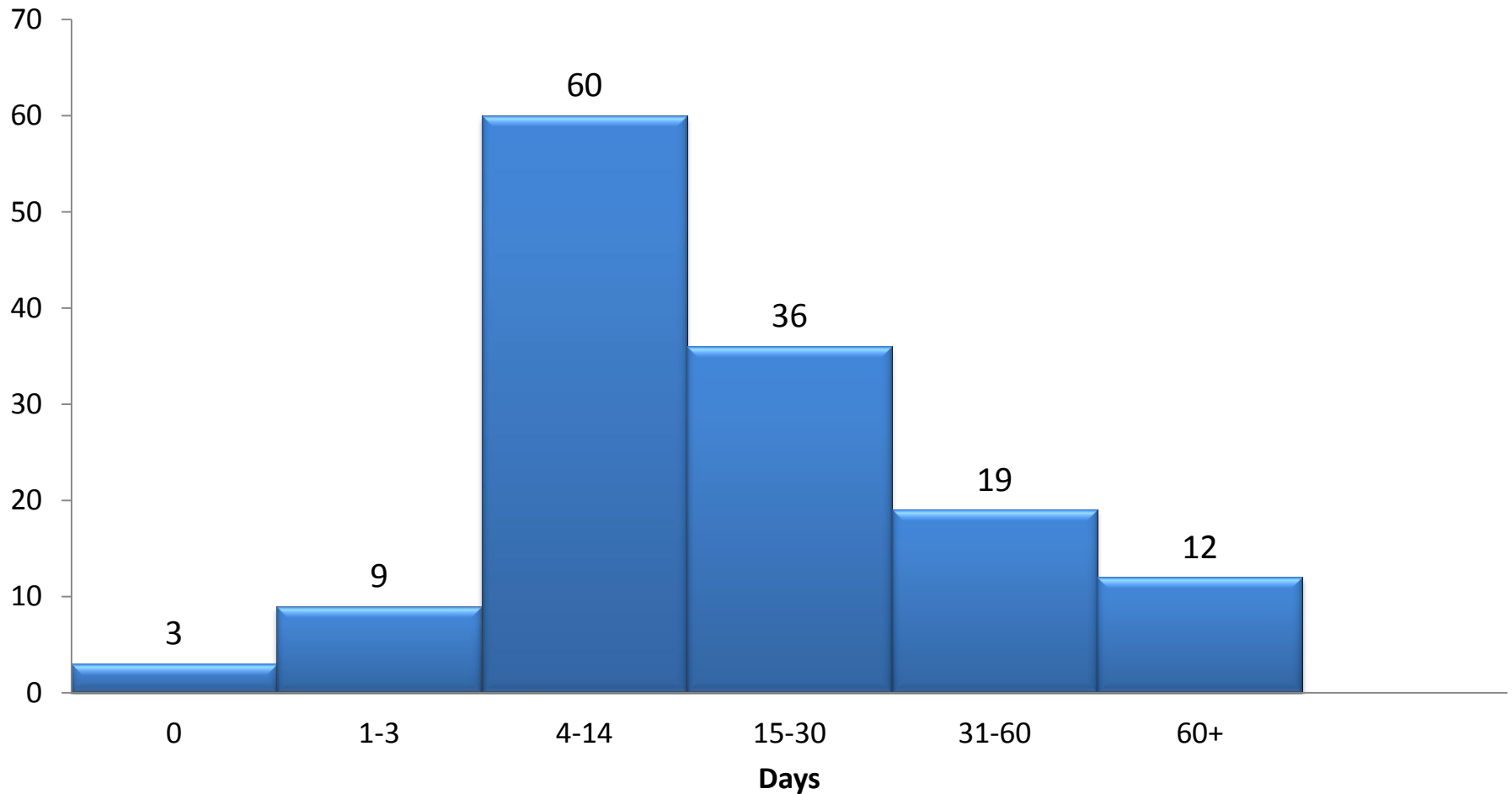
Children's Psychiatric Hospitalizations by age

Gender by Age



Length of Stay for Children with DD

Length of Stay (n=139)



Review of Admissions by Diversion Potential

Hospital Admissions N= 139	# of Individuals with DD in which Hospital Diversion Could Have Occurred	% Hospital Diversion that Could Have Occurred	# of Individuals with DD in which Hospital Diversion not Clinically Advised	% Hospital Diversion not Clinically Advised
CCCA	40	29%	89	64%
TOTAL	40/139	29 %	89/139	64%



What additional questions do you have?

Questions the workgroup had...

Children's System Gap

- Settlement Agreement Expectation
- Psychiatric Data
- REACH Data

Children's Continuum of Care

- Planned Preventative Crisis “Respite”
 - Avert a crisis
- Therapeutic Foster Care
 - Crisis Stabilization
 - “Younger” Children
- Crisis Therapeutic Home
 - Crisis Stabilization
 - “Primarily” Adolescents

Adult System Gap

- Data Reviewed
 - Psychiatric
 - CTH
 - REACH

Adult Continuum of Care

- Residential Treatment Program
 - Eligibility
 - Step up
 - Step down
 - 6 month stay
 - Assessment
 - Provider Development
 - Provider Training
 - Therapeutic Treatment Model
 - Multi Disciplined

Thoughts???