



Virginia Department of
Behavioral Health &
Developmental Services



Building Blocks of Virginia's Intellectual and Developmental Disability System

Autism Society
March 10, 2016

Connie Cochran

Virginia Department of Behavioral
Health and Developmental Services



My Life, My Community System Redesign



People with developmental disabilities living, working, and playing in their own communities is becoming the norm,
not the exception

My Life, My Community



Today's Discussion

1. Overview of system changes, system building blocks and the General Assembly Budget
2. Brief overview of waivers: Amendments and timeframe
3. The statewide waiting list: Why and how
4. Information about key services that change the landscape
5. How to stay informed

Building Blocks of DD System

Our opportunities are impacted on how strong or weak our links are to others in the greater community in which we live.

Employment and Alternate Day Options Including Volunteering & Recreation



Self-Directed Options & Services that build links with others



Residential Options-that access similar housing as others



REACH Crisis Support Options—everywhere



Medical and Behavioral Support Options-connecting to primary care



Proposed

Additional Options-professional

DD Community Based System



To Provide Individuals and Families With...

- Access to more targeted, needs-based services including: Adult & Child DD Crisis, Individual & Family Support, Housing, Employment
- Increased flexibility in service options that focus on supports not sites
- Easier to navigate waiver process
- The ability to more easily change options as needs change



For Providers...

- Enhanced service delivery options including: consistency on how wait lists are managed; how case managers develop services and begin the conversation—including linkage with crisis & health support network across state
- Increased flexibility in service design including first understanding how one's typical week is & how it could be
- Rates that promote qualified, well-trained staff to meet individuals' changing needs



Proposed Integrated I/DD Waiver Redesign

Day
Support
Waiver

DD
Waiver

ID
Waiver

Building Independence Waiver

For adults (18+) able to live independently in the community. Individuals own, lease, or control their own living arrangements and supports are complemented by non-waiver-funded rent subsidies. Supports are episodic/periodic in nature.

Family & Individual Supports Waiver

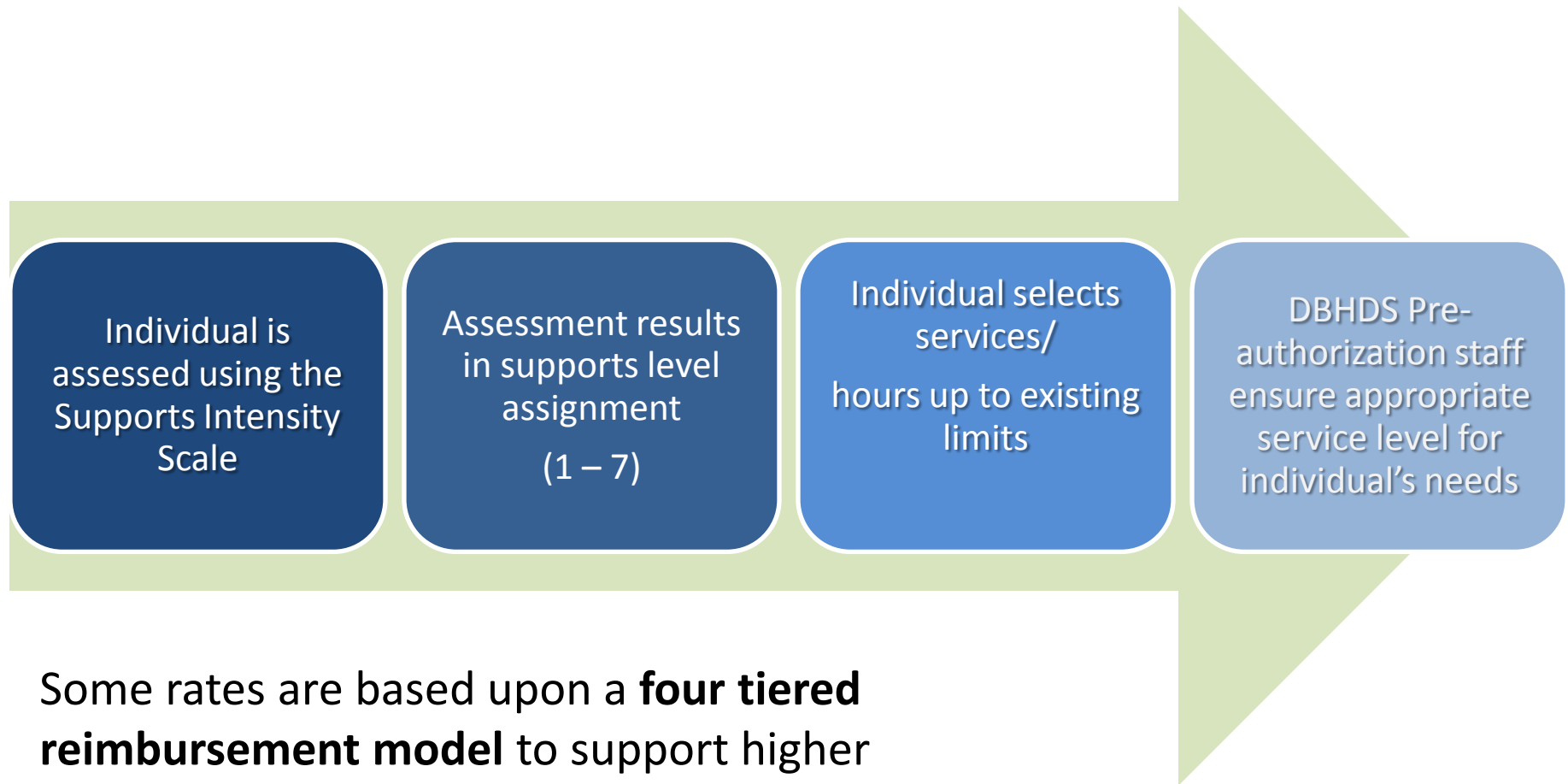
For individuals living with their families, friends, or in their own homes, including supports for those with some medical or behavioral needs. Available to both children and adults.

Community Living Waiver

24/7 services and supports for individuals with complex medical and/or behavioral support needs through licensed services. Includes residential supports and a full array of medical, behavioral, and non-medical supports. Available to adults and some children.

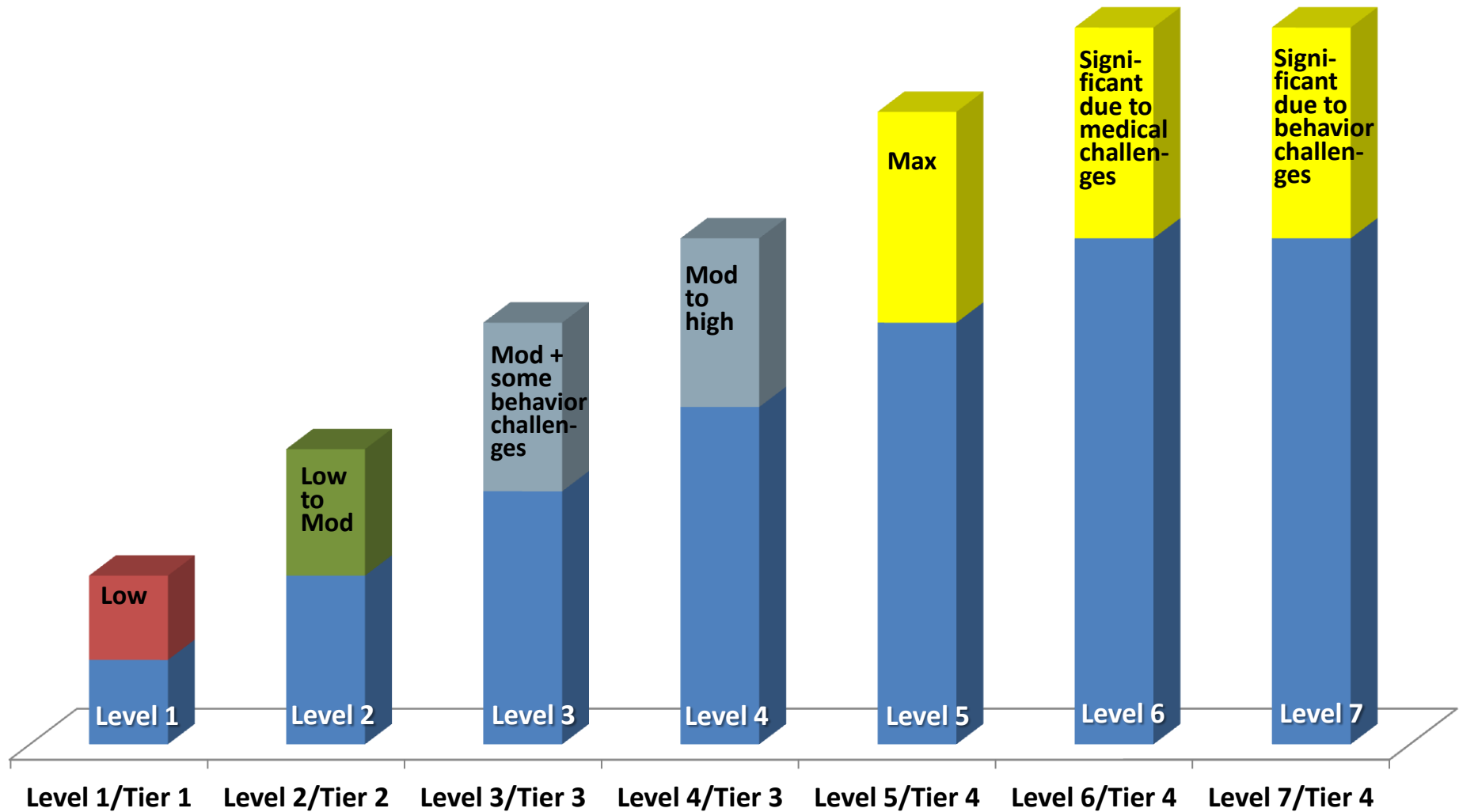


Fundamental to the Amended Waivers



Some rates are based upon a **four tiered reimbursement model** to support higher staffing patterns for individuals with greater assessed intensity of need

Relationship of Individual Levels to Reimbursement Tiers



Levels and Tiers

Supports Needs Levels/Tiers Projections

Tiers	Levels		# of Individuals	%
①	①	Mild Support Needs	840	7.3%
②	②	Moderate Support Needs	4,360	37.9%
③	③	Mild/Moderate Support Needs with Some Behavioral Support Needs	276	2.4%
	④	Moderate to High Support Needs	4,452	38.7%
④	⑤	High to Maximum Support Needs	610	5.3%
	⑥	Intense Medical Support Needs	794	6.9%
	⑦	Intense Behavioral Support Needs	173	1.5%



When Do Changes Begin?

Starting on July 1, 2016

- Amended waivers w/new services including group home rates
- New support levels and reimbursement tiers
- New Waiver Management System (FEi) replacing IDOLS
- CSBs to assume single point of entry for all DD waivers
- New eligibility process and revised tool (VIDES)
- Single statewide priority-based waitlist

When Do Changes Begin?

Starting on July 1, 2016

- Updated orientation manual to include health risks and related staff competencies
- Behavioral and Autism Competencies currently available

Section Number		Direct Support Staff	Qualified DD Professional	Behavior Interventionist	Training Received	Implemented Skills	Proficiency Determined
1	Ethics						
1.A	Ensures a positive climate that promotes respect and dignity for the person being supported (consistent with person centered practices).	X	X	X			
1.B	Describes role in the service delivery system in relation to behavioral supports and person centered thinking.	X	X	X			

Waiver Timeline Planned Target Dates

- **Building Independence, Family & Individual Supports** and **Community Living** Waivers commence
- New **group home** rate structure (daily billing vs. current hourly billing) in effect.
- Other services effective by individual plan year.

- New **sponsored residential** rate structure transition in effect.
- Other services effective by individual plan year or potential groups (day services)

**July
2016**

**October
2016**

**January
2017**

Transition of **In-home & non-residential** individuals (e.g. living with family) in effect.

Statewide Waiver Wait List

- All three amended waivers will serve individuals with a diagnosis of DD (which includes ID).
- Individuals seeking waiver services for persons with any developmental disability will have diagnostic and functional eligibility confirmed by their local CSB and, as appropriate, be placed on a single state wide waiting list.
- Waiver wait lists will be maintained by the local CSB for all individuals under their jurisdiction, including those served by DD CM agencies. Regional DBHDS staff will assist.
- DBHDS will support the waiver selection committees and the awarding of slots

Merging the Waiting Lists

ID & DS Waivers

Waiting List Based on
Urgency of Need

DD Waiver

Waiting List Based on
Chronology

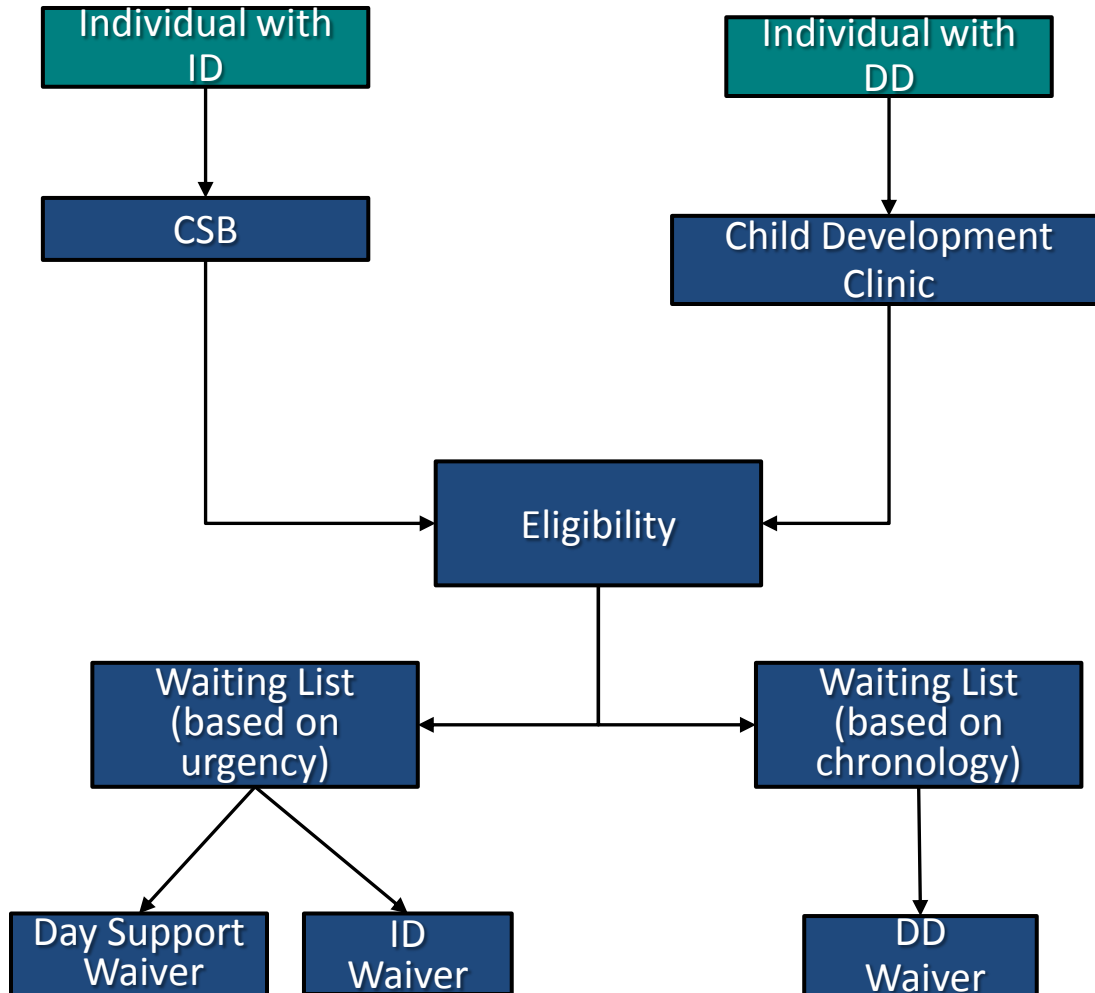
Determine
Level of
Priority

Waiting List for
Individuals and ID & DD:
Priorities 1-3

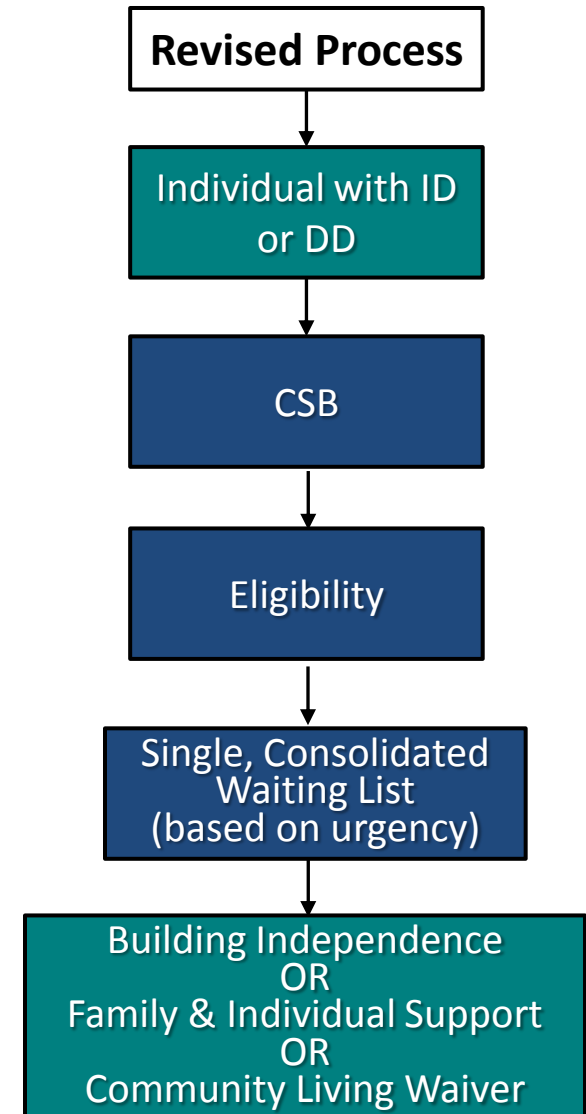


Streamlined, Needs-Based Access

Current Process



Revised Process



Wait List Procedure-Increasing Consistency

- 5 DBHDS Regional Supports Specialists (RSSs) based at DBHDS, will assist CSBs to manage this process, and support the Waiver Slot Assignment Committees (WSACs).
- The amended waivers separate the eligibility determining entity (CSB SCs) from the slot assignment entity (DBHDS-supported committees of community members).
- WSACs:
 - Impartial trained volunteers for each locality/region who assign waiver slots according to urgency of need.
 - Not affiliated with a CSB or private provider
 - Knowledge and/or experience with persons with DD or the service system.

Eligibility

DD Waivers' Eligibility Factors

- ✓ Possess a diagnosis of DD
- ✓ Meet level of care criteria (determined by the VIDES)
- ✓ Meet Medicaid financial eligibility

If a slot is not available, the SC:

- ✓ Places the person's name on the waiting list via WaMS
- ✓ Completes a **Critical Needs Summary** documenting the person's level of urgency
- ✓ Determines the individual's priority needs level

Eligibility Priorities - ONE

Level	Timeframe	Criteria
Priority ONE Status	All individuals determined to meet one of the following criteria and require a waiver service within one year.	<ol style="list-style-type: none">1. An immediate jeopardy to health and safety due to the unpaid primary caregiver having a chronic or long-term physical/psychiatric condition(s) that significantly limits ability to care for the individual; no other unpaid caregivers available to provide supports;2. There is a risk to the health or safety of the applicant, primary caregiver, or other person living in the home due to either:<ol style="list-style-type: none">a) Individual's behavior present a risk to self or others unable to be managed by the primary caregiver/unpaid provider even with SC arranged generic or specialized supports, orb) Physical care or medical needs cannot be managed by the primary caregiver even with SC arranged generic or specialized supports;3. Individual lives in an institutional setting and has a viable discharge plan; or4. Individual is a young adult transitioning and is no longer eligible for IDEA services (e.g., in a foster care, residential setting, etc.).

Eligibility Priorities - TWO

Level	Timeframe	Criteria
Priority TWO Status	Individual meets one of the following criteria and a service is needed in one to five years.	<ol style="list-style-type: none">1. The health and safety of the individual is likely to be in future jeopardy to due to:<ul style="list-style-type: none">• Unpaid primary caregiver having a declining chronic or long-term physical or psychiatric condition(s) that significantly limits ability to care for the individual,• No other unpaid caregivers available to provide supports, and• Individual's skills are declining due to lack of supports;2. Individual is at risk of losing employment supports;3. The individual is at risk of losing current housing due to lack of adequate supports and services; or4. The individual has needs or desired outcomes that with adequate supports will result in a significantly improved quality of life.

Eligibility Priorities - THREE

Level	Timeframe	Criteria
Priority THREE Status	“Active Planning” <ul style="list-style-type: none">• A service is being currently sought• The system has determined that the individual may not need to access a waiver slot for more than five years as long as the current supports and services remain• The system should plan for future needs, as this person may present at any time	<ol style="list-style-type: none">1. The individual is receiving a service through another funding source that meets current needs;2. The individual is not currently receiving a service but is likely to need a service in five or more years; or3. The individual has needs or desired outcomes that with adequate supports will result in a significantly improved quality of life.

Slot Assignment-Managed by DBHDS

- To be considered for slot assignment, an individual must:
 - ✓ Meet diagnostic and functional eligibility requirements,
 - ✓ Be determined to meet one of the Priority One criteria,
 - ✓ Need services within 30 days, and
 - ✓ Accept the requested service if it were offered.
- When the CSB has slots available for assignment they contact the WSAC facilitator for intensive review.
- After WSAC slot assignment determination, the CSB proceeds with waiver enrollment.

Reserve Slots

Reserve slots support emergencies and movement between the waivers.

Reserve slots are managed by DBHDS.



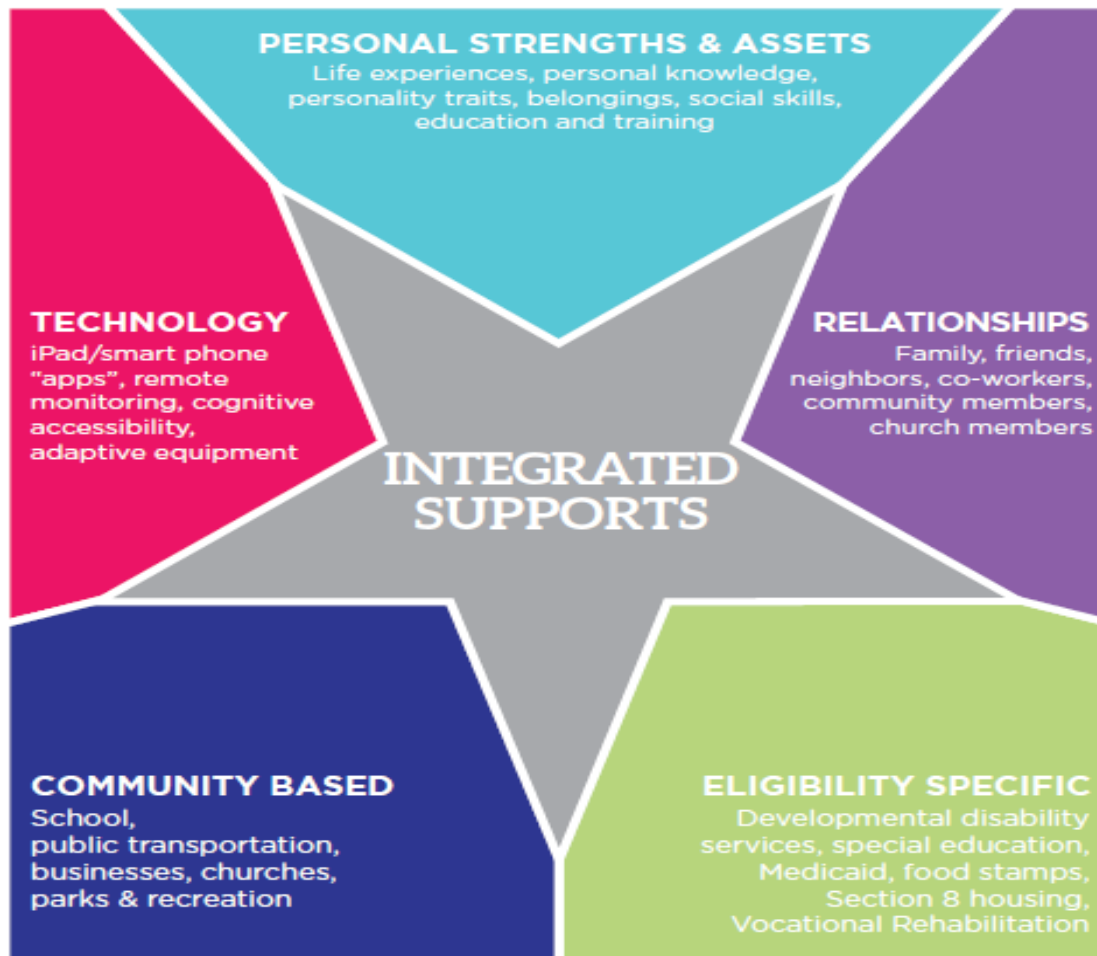
Emergency Slots

Emergency Criteria:

- CPS or APS has substantiated abuse/neglect against the primary caregiver and has removed the individual from the home; or for adults, where abuse/neglect has not been substantiated but corroborating information from other sources (agencies) indicate there is an inherent risk present. There are no other caregivers available to provide support services to the individual.
- Death of primary caregiver and/or lack of alternate caregiver coupled with the individual's inability to care for him/herself and danger to self or others without supports.

Integrated Supports

Integrated Supports Across the Life Course



Strategies for Supporting Real Lives

Discovery & Navigation: Knowledge & Skills

- Information on disability
- Knowledge about best practices and values
- Skills to navigate and access services
- Ability to advocate for services and policy change

Connecting & Networking: Mental Health & Self-efficacy

- Parent-to-Parent Support
- Self-Advocacy Organizations
- Family Organizations
- Sib-shops
- Support Groups
- Professional Counseling
- Non-disability community support

Day-to-Day Services: Instrumental Supports

- Self/Family-Directed services
- Transportation
- Respite/Childcare
- Adaptive equipment
- Home modifications
- Financial assistance
- Cash Subsidies
- Short/Long term planning
- Caregiver supports & training

Michelle "Sheli" Reynolds, PhD | UMKC-Institute for Human Development | reynoldsmc@umkc.edu

2/2015



Integrated Supports

1.) LIVING SETTING
Agency Home Support 1 Person
2.) LEVEL ASSIGNMENT
4
3.) MONTHS IN SETTING
12

	MONDAY	TUESDAY	WEDNESDAY	THURSDAY	FRIDAY	SATURDAY	SUNDAY
6am							
7am							
8am							
9am							
10am	Paid (Base)		Paid (Base)	Paid (Base)	Paid (Base)		
11am		Paid (Base)					Community
12pm							
1pm							
2pm		Paid (Base)				Personal	
3pm							Relationship
4pm				Paid (Base)			
5pm	Paid (Base)				Relationship		
6pm						Paid (Base)	
7pm							
8pm							
9pm							

L

Please select a block of time to the left.

Time can be selected in individual blocks or by selecting one block and dragging the handles to expand time across multiple hours for each day.

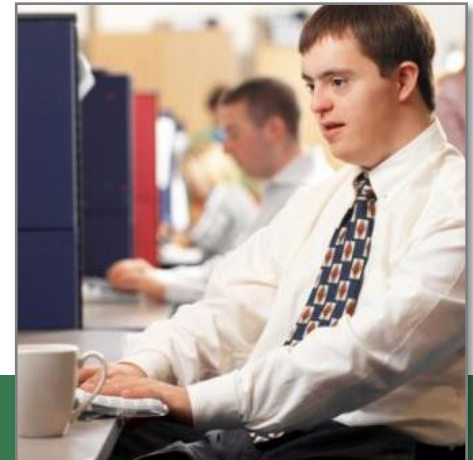
Note sure which way is up?
[Review instructions](#)

TIP:
Using a combination of many different kinds of support help plot a trajectory toward an inclusive, quality, community. Brainstorm supports in order work in partnership to make vision for a good life possible.

Employment & Day Options

Employment & Day Options*	Building Independence	Family & Individual	Community Living
Individual Supported Employment	✓	✓	✓
Group Supported Employment	✓	✓	✓
Workplace Assistance Services		✓	✓
Community Engagement	✓	✓	✓
Community Coaching	✓	✓	✓
Group Day Services	✓	✓	✓

**Currently proposed that Employment and Day Options cannot exceed 66 hours per week combined.*



Employment & Day Options: Community Engagement

New Service!

Provides a wide variety of opportunities to facilitate and build relationships and natural supports in the community, while utilizing the community as a learning environment. These activities are conducted at naturally occurring times and in a variety of natural settings in which the individual actively interacts with persons without disabilities (other than those paid to support the individual).

Allowable activities include but are not limited to:

- ✓ Activities and events in the community
- ✓ Community, educational or cultural activities and events
- ✓ Unpaid work experiences (volunteer opportunities)
- ✓ Employment readiness activities including discovery of interests, abilities and skills
- ✓ Maintaining contact with family and friends
- ✓ Gives flexibility to various day activities



Self-Directed Options

Self-Directed Options	Building Independence	Family & Individual	Community Living
Consumer-Directed Services Facilitation		✓	✓
CD Personal Assistance Services*		✓	✓
CD Respite*		✓	✓
CD Companion*		✓	✓

** can also be agency-directed*



Self-Directed Options: Respite

Provides temporary supports during emergencies and at other times as needed by an unpaid caregiver. Can be in the individual's home, a provider's home or other community locations.

Allowable activities include but are not limited to:

- ✓ Support with activities of daily living such as: bathing or showering, toileting, routine personal hygiene skills, dressing, transferring, etc.;
- ✓ Support with monitoring health status and physical condition;
- ✓ Support with medication and/or medical needs;
- ✓ Support with preparation and eating of meals;
- ✓ Support with housekeeping activities, such as bed-making, dusting and vacuuming, laundry, grocery shopping, etc.;
- ✓ Support to ensure the safety of the individual;
- ✓ Support needed by the individual to participate in social, recreational, or community activities;
- ✓ Accompanying the individual to appointments or meetings.

Residential Options

Residential Options	Building Independence	Family & Individual	Community Living
Independent Living Supports	✓		
Shared Living	✓	✓	✓
Supported Living		✓	✓
In-Home Support Services		✓	✓
Sponsored Residential			✓
Group Home Residential			✓



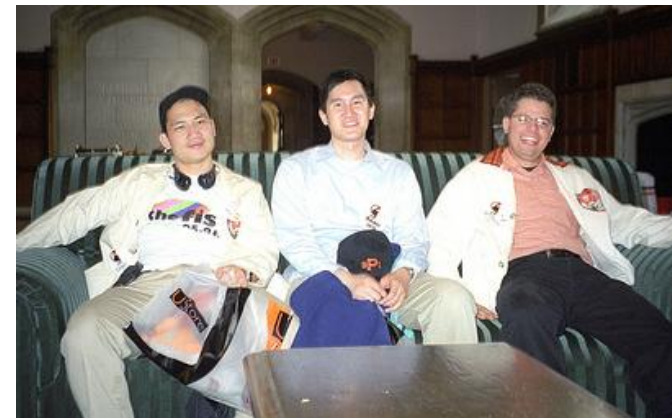
Residential Options: Independent Living Supports

New Service!

A service provided to adults (18+) that offers skill building and support to secure self-sustaining, independent living in the community and/or may provide the support necessary to maintain those skills. Typically lives alone or with roommates in own home/apartment.

The allowable activities include but are not limited to:

- ✓ Skill-building and support to promote community inclusion
- ✓ Increasing social abilities and maintaining relationships
- ✓ Increasing or maintaining health, safety and fitness
- ✓ Improving decision-making and self-determination
- ✓ Promoting meaningful community involvement
- ✓ Developing and supporting with daily needs



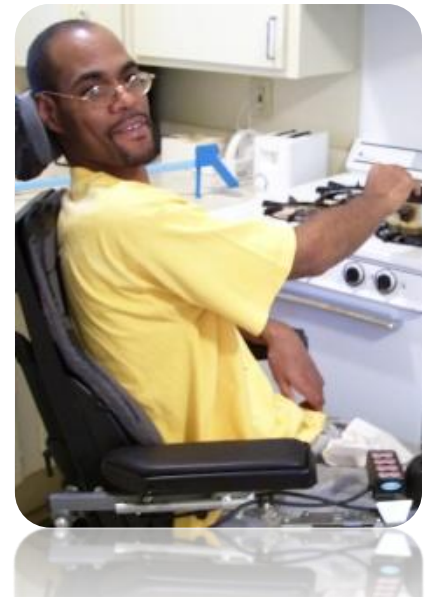
Residential Options: Shared Living

New Service!

Medicaid payment for a portion of the total cost of rent, food, and utilities that can be reasonably attributed to a person who has no legal responsibility to support the individual and resides in the same household as the individual.

In Shared Living:

- ✓ **Match** is based on individual choice and supports are arranged through a person-centered process.
- ✓ The companion has **no responsibility for skill-building or medical services**.
- ✓ The live-in must complete and pass **background checks** and successfully meet **training requirements** defined in the individual's person-centered plan
- ✓ The coordinating agency must ensure that there is a **back-up plan** in the event that the live-in companion is unable to provide supports.



Shared Living location **cannot** be in a provider-run home, the live-in companion's home, or any other arrangement where the individual is not directly responsible for that residence.

Crisis Support Options

Crisis Support Options	Building Independence	Family & Individual	Community Living
Community-Based Crisis Supports	✓	✓	✓
Center-Based Crisis Supports	✓	✓	✓
Crisis Support Services	✓	✓	✓



Medical & Behavioral Options

Medical & Behavioral Options	Building Independence	Family & Individual	Community Living
Skilled Nursing		✓	✓
Private Duty Nursing		✓	✓
Therapeutic Consultation		✓	✓
Personal Emergency Response System (PERS)	✓	✓	✓



Medical & Behavioral Options: Personal Emergency Response System (PERS)

Personal Emergency Response System (PERS) is an electronic device that enables certain individuals to secure help in an emergency. When appropriate, PERS may also include medication-monitoring.

For individuals who are...

- ✓ Alone for significant parts of the day (or without needed support)
- ✓ May include medication monitoring devices
 - 2-way voice communication
 - 24 hour response



Additional Options

Additional Options	Building Independence	Family & Individual	Community Living
Assistive Technology	✓	✓	✓
Benefits Planning Services	✓	✓	✓
Community Guide	✓	✓	✓
Electronic Home-Based Services	✓	✓	✓
Environmental Modifications	✓	✓	✓
Non-Medical Transportation	✓	✓	✓
Transition Services	✓	✓	✓



My Life, My Community

Updates at
My Life My Community

at DBHDS.virginia.gov

Also, with DARS establishing:

- 1-800 line for questions in April
- Interactive website in May

<http://www.dbhds.virginia.gov/individuals-and-families/developmental-disabilities/my-life-my-community>





Thank you!

