



HCPBS is a 501 (c) (3)  
nonprofit network of  
APBS

## Dangerous Behavior in Family Contexts: Keeping Sisters and Brothers Emotionally and Physically Safe

*Moderated by Ann Turnbull*

*Please visit our  
HCPBS Website:  
[www.hcpbs.org](http://www.hcpbs.org)  
Make a donation!*

This webinar will begin with the perspectives of a sibling (also an adolescent psychotherapist) and parent who experienced domestic dangerous behavior. These "lived experiences" will be followed by a researcher who will share key findings of a comprehensive literature review related to sibling vulnerability and reactions. A behavioral interventionist and adolescent psychotherapist will discuss strategies for addressing prevention, as well as social-emotional-behavioral services and supports for siblings and other family members. Q & A will provide opportunities for participant questions.

### **About Ann:**

Ann has lived the 24/7 reality of seeking to simultaneously address the needs of her son who engaged in dangerous behavior and his sisters' needs for physical and emotional safety. She is a retired special education professor from the University of Kansas who specializes in family quality of life and trusting family-professional partnerships.



**December 13<sup>th</sup>, 3:00 – 5:00 PM EST**

**[REGISTER HERE](#)**

*See next page for a list of the panelists*



HCPBS is a 501 (c) (3)  
nonprofit network of  
APBS

# Dangerous Behavior in Family Contexts: Keeping Sisters and Brothers Emotionally and Physically Safe

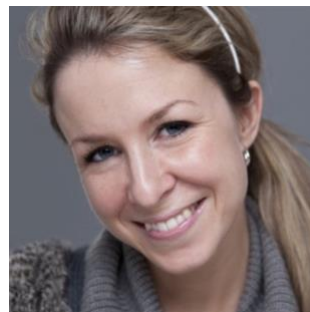
*Moderated by Ann Turnbull*

*Please visit our  
HCPBS Website:  
[www.hcpbs.org](http://www.hcpbs.org)  
Make a donation!*

This webinar will begin with the perspectives of a sibling (also an adolescent psychotherapist) and parent who experienced domestic dangerous behavior. These "lived experiences" will be followed by a researcher who will share key findings of a comprehensive literature review related to sibling vulnerability and reactions. A behavioral interventionist and adolescent psychotherapist will discuss strategies for addressing prevention, as well as social-emotional-behavioral services and supports for siblings and other family members. Q & A will provide opportunities for participant questions.



**Corinne Rochefort (Panelist):** Corinne is a psychology PhD student at the University of Quebec in Montreal. Her thesis topic focuses on the experiences of siblings who grew up with a brother or sister with a disability who exhibited severe challenging behavior as a child.



**Méлина Rivard (Panelist):** Méлина is a Professor in the Psychology Department at the University of Quebec in Montreal. She is Research Chair in intellectual disabilities and behavior disorders and carries out longitudinal research and intervention with not such individuals with challenging behavior but with their families as well.



**Kate Turnbull (Panelist):** Kate grew up with a brother who experienced an intellectual disability and severe challenging behavior. She is currently a psychotherapist who works with teens who face a variety of challenges, including intensive sibling experiences with dangerous behavior.



**Kathryn Bailey (Panelist):** Kathryn grew up with a sibling with autism and is now a doctoral student in Special Education at Vanderbilt University. Her research interests focus on the development of blended language and challenging behavior interventions for young children with disabilities and their families.